

Genus	Vol. 11 (4): 589-592	Wrocław, 26 XII 2000
-------	----------------------	----------------------

Pseudodera malaysiana, a new species of flea beetles from
Malaysia
(Coleoptera: Chrysomelidae: Alticinae)

MOHAMED S. MOHAMEDSAID

Centre for Insect Systematics Universiti Kebangsaan Malaysia, 43600 Bangi, Malaysia

ABSTRACT. An alticine beetle of the genus *Pseudodera* BALY is recorded for the first time from Malaysia; it is a new species, *Pseudodera malaysiana* n. sp.

Key words: entomology, taxonomy, new species, *Coleoptera*, *Chrysomelidae*, *Alticinae*, *Pseudodera*, Malaysia.

INTRODUCTION

The genus *Pseudodera* was established by BALY (1861), with *Pseudodera xanthospila* BALY, described from China, as the type species. The genus, which is distributed in the Oriental region, is represented by 9 species (HEIKERTINGER & CSIKI 1940, SCHERER 1969, KIMOTO 2000). In Malaysia *Pseudodera*, which is represented by a new species, and this is the first record of the genus from that area.

Pseudodera differs from other alticine genera in the following characters: dorsal surface glabrous, antennae 11-segmented, pronotum with distinct antebasal depression limited on each side by a short longitudinal impression, procoxal cavities closed posteriorly, elytra at base broader than prothorax, covered with punctures arranged in longitudinal rows, metafemora moderately enlarged, tibiae cylindrical.

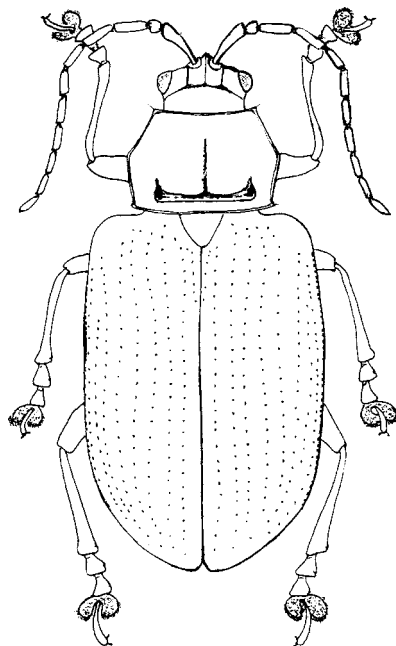
***Pseudodera malaysiana* n. sp.**

(Fig. 1)

DESCRIPTION

Yellowish, except black tibiae, tarsi, metasternum and abdomen. Head small, narrower than pronotum; vertex smooth, sparsely covered with small punctures; frontal tubercles very strongly raised, elongate triangular, extended into interantennal space, forming two parallel carinae; clypeus rather concave, smooth, shiny; labrum transverse, truncate at apex, covered with few long hairs; mandibles very large, blackish at apices; maxillary palpi filiform, apical segment conical, slightly shorter than the penultimate segment. Eyes very small, with interantennal space 3 times as broad as transverse diameter of each eye. Antennae robust, extended to middle of elytra; segment 1 longest, club-shaped; segment 2 shortest, as broad as long; segment 3 c. 2.5x as long as 2; segments 4-10 gradually shortened; segment 11 slightly longer than 10, pointed; interantennal space very narrow.

Thorax: Pronotum subquadrate, 1.5 times as broad as long, broadest at the angulate sides in middle, convex in apical half, depressed in basal half; ante-basal depression broad, deep, limited on sides by short longitudinal impressions, the latter deeply depressed, pit-like; a median longitudinal impression extended from

1. *Pseudodera malaysiana* n. sp., general view

antebasal depression towards middle of apical half, impressed with row of punctures; anterior, lateral and posterior borders margined; anterior margin concave, posterior margin rather straight, sinuate in middle; lateral margins angulate in middle; anterior and posterior angles acute, with seta-bearing pores. Scutellum broadly triangular, rounded at apex, flat, impunctate, shiny. Elytra entirely yellowish, parallel-sided, rounded at apex; punctures arranged in eleven rows, including a short scutellar row, the interstices impressed with very small punctures; epipleuron broad from base to apical one-fourth, then narrowed towards apex. Legs robust, with moderately enlarged metafemora, metatibiae without a spine at apex; tarsal claws appendiculate.

Abdomen densely covered with golden pubescence. Apical stemite entire, as long as two preceding sternites combined.

Body length 7.5-8.0 mm. Male. Unknown.

TYPES

Holotype female: MALAYSIA, Pahang, Cameron Highlands, 23.II.1974, Y. KIYOYAMA. Paratype: MALAYSIA, Pahang, Tanah Rata, 30.III.1976, Y. MIYAKE, female. Type specimens are deposited in the Centre for Insect Systematics, Universiti Kebangsaan Malaysia, Bangi (UKM).

ETYMOLOGY

The name of the new species, *malaysiana*, is derived from the word Malaysia.

DIAGNOSIS

Pseudodera xanthospila BALY differs from the new species in having elytra reddish, with yellowish spots on apical half, antennae black, interantennal space broader, nearly as broad as antennal socket, and pronotum reddish, without the median longitudinal impression. *Pseudodera nigripes* KIMOTO differs from the new species in pronotum rounded at lateral sides and without the median longitudinal impression.

ACKNOWLEDGEMENTS

The study on the Malaysian *Chrysomelidae* is funded by the IRPA Project No. 08-02-02-0003, which is gratefully acknowledged. The author would like to thank Prof. Dr. Shinsaku KIMOTO for his generosity in suggesting that the type specimens be kept in the repository of the Centre for Insect Systematics, Universiti Kebangsaan Malaysia, Bangi (UKM). Thanks are also extended to Dr. Yang XINGKE for providing me with specimens of *Pseudodera xanthospila* BALY from China.

REFERENCES

- BALY, J.S., 1861. Descriptions of new genera and species of *Phytophaga*. Journ. Ent., 1: 193-206, 275-302.

- KIMOTO, S., 2000. Descriptions of some new genera and species of *Chrysomelidae* (Coleoptera) from Thailand, Laos, and Vietnam. *Serangga*, **5**: 1-39.
- HEIKERTINGER, F., CSIKI, E., 1940. Coleopterorum Catalogus, *Chrysomelidae, Halticinae*, Pars 169: 337-635.
- SCHERER, G., 1969. Die Alticinae des indischen Subkontinentes (*Coleoptera - Chrysomelidae*). Pacific Insects Monograph, **22**: 1-251.