

Genus	Vol. 24(3-4): 503-507	Wrocław, 28 XII 2013
-------	-----------------------	----------------------

Hasarius firmus sp. nov., a new spider species from Cameroon
(Araneae: Salticidae)

KONRAD WIŚNIEWSKI & WANDA WESOŁOWSKA

Department of Biodiversity and Evolutionary Taxonomy, Wrocław University, Przybyszewskiego 63/77,
51-148 Wrocław, Poland, e-mail: konrad.wisniewski@uni.wroc.pl; tomwes@biol.uni.wroc.pl

ABSTRACT. A new jumping spider species from central Africa, *Hasarius firmus* is described.

Key words: arachnology, taxonomy, jumping spiders, *Hasarius*, new species, Afrotropical Region

The present list of Salticidae of Cameroon contains only 25 species (PRÓSZYŃSKI 2013). This low number of species is a consequence of the very scarce knowledge on salticid fauna of central Africa in general. There has not been any thorough faunistic analysis so far, therefore each new species description or record is of great value, even if it is based on a single specimen.

The described species comes from the collection of Åke Holm, unfortunately there is no information on microhabitats on the label. The spider was most probably found in the vicinity of Limbe, at the foot of Mount Cameroon.

Spiders from the genus *Hasarius* are widely distributed around the world. There are 26 probably not related species, 8 of them live in Africa, mainly on islands (PLATNICK 2013). In Cameroon only one species has been found up to now – *H. cheliceroides* and it is given only from Mt Cameroon (BOROWIEC & WESOŁOWSKA 2002).

***Hasarius firmus* sp. nov.**

Figs 1–5

HOLOTYPE

male, CAMEROON, Kamerun-berget [Mount-Cameroon], Victoria [Limbe, 04°00'N, 09°11'E], III. 1956, coll. Å. Holm (Museum of Evolution, Uppsala University).



1. *Hasarius firmus*, holotype, dorsal view

DIAGNOSIS

Hasarius firmus can be easily identified by the structure of palpal organ with a distinct proximal protrusion on a bulb and the very long and firm chelicerae.

ETYMOLOGY

The specific name means in Latin strong, firm, robust and refers to the shape of chelicerae.

DESCRIPTION

Dimensions in mm. Cephalothorax: length 3.4, width 2.6, height 1.7. Eye field: length 1.6, anterior width 2.0, posterior width 1.9. Abdomen: length 3.4, width 2.0.

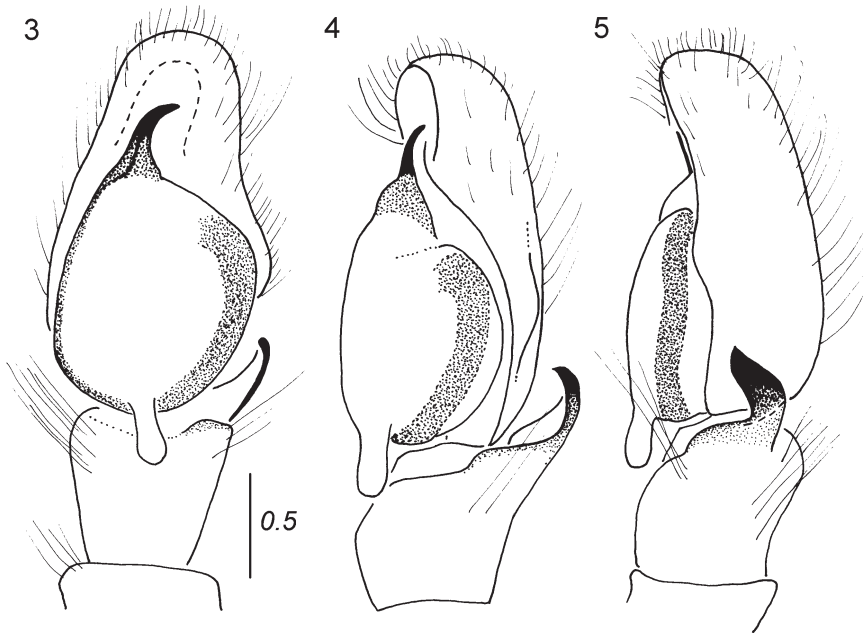
Male. General appearance as in Fig. 1. Carapace oval, moderately high, brown with slightly lighter area on fovea, lateral margins of eye field black. Fovea sulciform. White hairs around anterior eyes, on eye-field and on sides of head region. They also form three patches on thoracic part: two near the margins of carapace in its posterior part and a single one in the middle of the thoracic part. First row of eyes procurved, distance between anterior lateral eyes slightly larger than between lateral posteriors. Clypeus low, dark brown, with short hairs. Chelicerae brown, long, sturdy, unidentati, retromarginal tooth big (Fig. 2). Endites brown, relatively long; labium dark brown, longer than wide. Sternum yellowish, covered with long hairs. Legs long, brown, only



2. *Hasarius firmus*, holotype, chelicerae, ventral view

coxae and trochanters dark yellow. First pair considerably longer than the others (tibia and metatarsus particularly long). Hairs on legs thin, dense, brown, on femora – white. Very long spine in the middle of a dorsal side of femora on each leg. Abdomen ovoid, brownish with large yellow patch on dorsum (Fig. 1), ventrally uniformly brownish. A few brown bristles on dorsum of abdomen. Spinnerets light. Pedipalps as in Figs 3–5. Embolus short, robust. Bulb oval, with a long and thin protrusion in its proximal part (Fig. 3). Retrolateral tibial apophysis slightly curved and twisted, wide at its base (Fig. 4). Cymbium with small tutaculum in the middle of retrolateral side.

Female unknown.



3–5. *Hasarius firmus*, palpal organ: 3 – ventral view, 4 – ventrolateral view, 5 – retrolateral view

REMARKS

Taxonomic status of this species is uncertain and it will have to be verified after finding the female. Inclusion of this species into *Hasarius* SIMON, 1871 is provisional and based on the body shape, proportions of the eye field and form of the chelicerae. The structure of palpal organs resembles slightly that of many *Evarcha* spp. However the presence of the posterior long process on a bulb is unique and habitus of this species is different than in *Evarcha*.

REFERENCES

- BOROWIEC, B., WESOŁOWSKA, W., 2002. A new species of *Hasarius* from Mount Cameroon (Araneae: Salticidae). Genus, **13**: 405–408.

- PLATNICK, N. I., 2013. The world spider catalog, version 14.0. American Museum of Natural History, online at <http://research.amnh.org/iz/spiders/catalog>. DOI: 10.5531/db.iz.0001. (11th November 2013).
- PRÓSZYŃSKI, J., 2013. Monograph of Salticidae (Araneae) of the World. <http://www.peckhamia.com/salticidae/salticidae.php> (11th November 2013).