

Genus	Vol. 14 (4): 581-584	Wrocław, 28 XII 2003
-------	----------------------	----------------------

## A new species of the genus *Chinattus* LOGUNOV, 1999 from Nepal (Araneae: Salticidae)

DMITRI V. LOGUNOV

The Manchester Museum, The University of Manchester, Oxford Road, Manchester M13 9PL, UK  
E-mail: dmitri.v.logunov@man.ac.uk

ABSTRACT. A new species, *Chinattus chichila* n. sp. (♂ ♀), is described from Nepal.

Key words: arachnology, taxonomy, Salticidae, *Chinattus*, new species, Nepal.

### INTRODUCTION

The Holarctic genus *Chinattus* was recently established by LOGUNOV (1999); together with a new species described later from China (Taiwan) (BAO & PENG 2002), a new combination proposed by EDWARDS (2002) and a synonymy revealed after the description of the genus (SONG, ZHU & CHEN 1999: 512, sub *Habrocestoides*), *Chinattus* currently consists of 11 valid species (s. PLATNICK 2003; EDWARDS 2002). A twelfth species from Nepal will be described subsequently.

Specimens for this study were borrowed from NHMB - Naturhistorisches Museum, Basel, Switzerland (Dr A. HÄNGGI). The format of the description and the terminology follows LOGUNOV (1999). All measurements are in mm.

### *Chinattus chichila* n. sp.

(Figs 1-6)

#### TYPE MATERIAL

Holotype: 1 ♂ (NHMB), NEPAL, Kosi, Chichila (TMKM – Chichira; 27°28'N, 87°14'E), 1900-2000 m a.s.l., 3-5.06.2001, M. BRANCUCCHI *et al.*

Paratypes: NEPAL: 2 ♀ (NHMB), Kosi, Num Khola (27°33'N, 87°18'E), 900-1000 m a.s.l., 8-10.06.2001, M. BRANCUCCHI *et al.*; 1 ♂ (NHMB), Kosi, Mure (27°30'N, 87°16'E), 2000-2100 m a.s.l., 6-12.06.2001, M. BRANCUCCHI *et al.*

#### ETYMOLOGY

The specific name is a noun in apposition taken from the type locality, Chichila in Nepal.

#### DIAGNOSIS

This new species is especially similar to *Chinattus wulingensis* (PENG et XIE, 1995) and *C. wulingoides* (PENG et XIE, 1995) described from single females and known to date from Hunan (China) only; the females of *C. chichila* n.sp. can easily be separated from those of both former species by poorly marked (almost invisible) glandular ducts and less heavily sclerotized receptacles (cf. Figs 5-6 and Figs 39-47 in PENG & XIE, 1995, sub *Habrocestoides*).

#### DESCRIPTION

##### *Male* (the holotype)

*Measurements.* Carapace 1.65 long, 1.25 wide, 0.90 high at PLE. Ocular area 0.88 long, 1.15 wide anteriorly and 1.05 wide posteriorly. Diameter of AME 0.39. Abdomen 1.55 long, 1.10 wide. Cheliceral length 0.65. Clypeal height 0.10. Length of leg segments:

	Fm	Pt	Tb	Mt	Tr	Total
I	1.20	0.75	0.95	0.66	0.45	4.01
II	0.93	0.55	0.58	0.55	0.35	2.96
III	1.00	0.45	0.60	0.60	0.40	3.05
IV	0.96	0.43	0.65	0.53	0.43	3.00

Leg spination: Leg I: Fm d 0-1-1; Tb v 2-2-2ap; Mt v 2-2ap. Leg II: Fm d 0-1-1-2; Tb pr 0-1, v 1-2-2ap; Mt v 2-2ap. Leg III: Fm d 0-1-1-2; Tb pr and rt 1-1, v 1-0; Mt pr and rt 1-2ap, v 2-2ap. Leg IV: Fm d 0-1-1-2; Tb pr 0-1, rt 1-0, v 1-0-1ap; Mt pr, rt and v 1-2ap.

*Coloration.* Carapace brown, with black marginal stripes and black veins. Eye field dark brown (almost black), sparsely covered with white scales. Black coloration around eyes. Clypeus brown, with dense transverse brush of white hairs overhanging the chelicerae. Sternum, maxillae, labium and chelicerae yellowish brown. Abdomen gray-brown, dorsum with a reticulate yellow pattern, completely covered with scutum. Book-lung covers yellow. Spinnerets yellowish brown. All legs yellow, with wide brown rings at ends of segments. Palps yellow, but cymbium brownish.

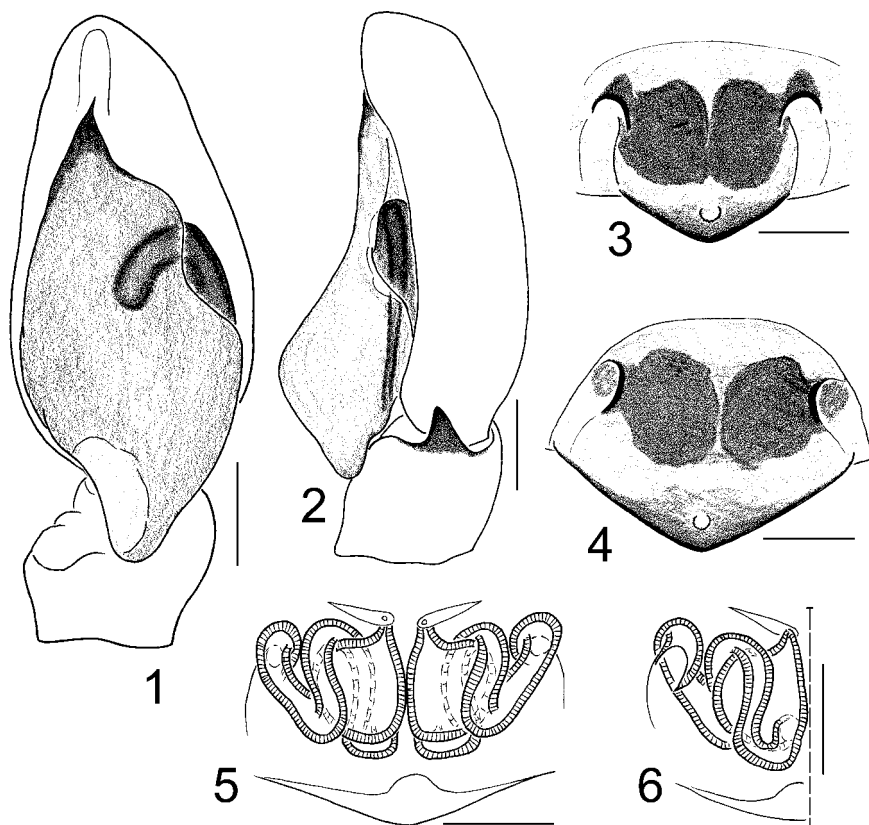
*Palpal structure* as in Figs 1-2; the tegulum elongate, nearly rhomboid; the embolus spine-shaped; the tibial apophysis short, cone-shaped.

*Female* (the paratype from Num Khola, Nepal)

*Measurements.* Carapace 1.60 long, 1.33 wide, 0.93 high at PLE. Ocular area 0.95 long, 1.23 wide anteriorly and 1.25 wide posteriorly. Diameter of AME 0.40. Abdomen 1.70 long, 1.30 wide. Cheliceral length 0.50. Clypeal height 0.08. Length of leg segments:

	Fm	Pt	Tb	Mt	Tr	Total
I	0.93	0.53	0.63	0.48	0.35	2.92
II	0.80	0.44	0.50	0.40	0.30	2.44
III	1.03	0.50	0.50	0.65	0.28	2.96
IV	0.96	0.43	0.63	0.75	0.29	3.06

Leg spination: Leg I: Fm d 1ap; Tb pr 0-1, 2-2-2ap; Mt v 2-2ap. Leg II: Fm d 2ap; Tb v 1-2-2ap; Mt v 2-2ap. Leg III: Fm d 1ap; Tb pr and rt 1-1, v 1-0-1ap; Mt



1-6. The copulatory organs of *Chinattus chichila* (♂ - holotype; ♀ - paratype): 1, ♂ palp, ventral view; 2, ditto, retrolateral view; 3-4, epigyne, variations; 5, spermathecae, dorsal view; 6, ditto, ventral view. Scale: 0.1 mm.

pr and rt 1-2ap, v 2-2ap. Leg IV: Fm d 1ap; Tb pr 0-1, rt 1-1; Mt pr and rt 1-2ap, v 2ap.

*Coloration.* As described for male, but paler and differs as follows: eye field lacks the covering of white scales; clypeus lacks the transverse brush of white hairs; dorsum without scutum; and palps completely yellow.

*Epigyne and spermathecae* as in Figs 3-6; the epigyne is a triangular plate overhanging the epigastric furrow; spermathecae massive, visible through the integument as a pair of dark rounded spots and consisting of the rounded receptacles twisted by the relatively wide insemination ducts.

#### HABITAT

*Lithocarpus/Casatanopsis* sclerophyll forest (sweeping/beating off vegetation and on fungi) and Ericaceae-sclerophyll forest (sweeping off vegetation) [present data taken from the collecting labels].

#### DISTRIBUTION

The type locality: Nepal (Kosi).

#### ACKNOWLEDGEMENTS

I wish to express my deep gratitude to Dr A. HÄNGGI (NHMB) for allowing me access to the salticid collections from Nepal kept in his museum. I am much obliged to Dr J. DUNLOP (Berlin, Germany) for linguistic help.

#### REFERENCES

- BAO, Y. H., PENG, X. J., 2002. Six new species of jumping spiders (Araneae: Salticidae) from Hui-Sun Experimental Forest Station, Taiwan. *Zoological Studies*, **41**: 403-411.
- EDWARDS, G.B., 2002. A review of the Nearctic jumping spiders (Araneae: Salticidae) of the subfamily Euophryinae north of Mexico. *Insecta Mundi*, **16**(1-3): 65-75.
- LOGUNOV, D. V., 1999. Redefinition of the genus *Habrocestoides* PRÓSZYŃSKI, 1992, with establishment of a new genus, *Chinattus* gen. n. (Araneae: Salticidae). *Bull. Br. arachnol. Soc.*, **11**: 139-149.
- PENG, X. J., XIE, L. P., 1995. Spiders of the genus *Habrocestoides* from China (Araneae: Salticidae). *Bull. Br. arachnol. Soc.*, **10**: 57-64.
- PLATNICK, N. I., 2003. The World Spider Catalog, Version 4.0, (Salticidae pages last updated July 15, 2003), American Museum of Natural History. <http://research.amnh.org/entomology/spiders/catalog81-87/index.html>
- SONG, D. X., ZHU, M. S., CHEN, J., 1999. The Spiders of China. *Shijiazhuang: Hebei Sci. Technol. Publ. House*. 640 pp.