

Genus	Vol. 17(2): 269-272	Wrocław, 30 VI 2006
-------	---------------------	---------------------

Review of *Ceutorhynchus canaliculatus* group, with description of a new species from Turkey (Coleoptera: Curculionidae: Ceutorhynchinae)

PIOTR BIALOOKI¹ and JERZY SZYPULA²

¹State Plant Health and Seed Inspection Service, Border Division Gdynia, Dokerów 5,
81-336 Gdynia, P.O. Box 245, Poland, og-gdynia@piorin.gov.pl

²Museum of Natural History, Wrocław University, Sienkiewicza 21, 50-335 Wrocław, Poland,
jszypula@biol.uni.wroc.pl

ABSTRACT. *Ceutorhynchus canaliculatus* group is defined. *Ceutorhynchus trichovenstris* n. sp. is described from Turkey. Key to determination of all known species of the group is given.

Key words: entomology, taxonomy, Coleoptera, Curculionidae, *Ceutorhynchus*, new species, key, Turkey.

Ceutorhynchus canaliculatus group comprises *C. canaliculatus* BRISOUT and *C. verticalis* COLONNELLI (COLONNELLI 1992, 2004). The group could be defined as follows: large or medium size *Ceutorhynchus* GERM. species with antennal funicle consisting of 7 joints; body dark blue, with minute, recumbent, strongly reduced vestiture, with no broad scales on elytral interstices; rostrum long, parallelsided, strongly sculptured in basal part, with five carinae; antennae inserted around midlength of rostrum; elytrae with very characteristic, bisinuate rows in basal portion; lateral tubercles of pronotum weakly developed. Very homogenous group of closely related species.

***Ceutorhynchus trichovenstris* n. sp.**

TYPE MATERIAL

Holotype, female: "S TURKEY, prov. İçel, 37°04'N/34°46'E, 400 m, Meşelik, 19 km NW Tarsus, 16.04.1998; leg. J. Szypula / *Ceutorhynchus trichovenstris*

sp. n.; holotype; P. Białooki et J. Szypuła design., female 2005" (coll. Museum of Natural History, Wrocław University); paratype female: leg. P. Białooki, otherwise the same label (coll. PB).

DIAGNOSIS

Ceutorhynchus trichovenstris n. sp. differs from other species of the group in strong reduction of body vestiture. Essential is the almost complete absence of broad scales on ventral side of body: punctures with minute hairs, whereas both *C. canaliculatus* BRIS. and *C. verticalis* COL. have ventral side of body covered with numerous, broad true scales, sharply contrasting with upper side of body covered with small, recumbent brown hairs and elytral rows with well visible grey scales. In contrast, *C. trichovenstris* n. sp. seems to be completely devoid of elytral vestiture; only careful examination reveals minute, very short, hardly visible dark hairs. The new species is apparently closer to *C. verticalis* COL. (one paratype, male, examined); differs from this species also in clearly more vaulted pronotum, both longitudinally and transversally, and in much broader elytral rows.

DESCRIPTION

Body length (without rostrum), females (male unknown) 2.8-3.0 mm; entire body except for rostrum and legs dark blue, shining.

Rostrum 1,2 x as long as pronotum length, regularly, moderately curved, basal portion heavily sculptured, with high middle carina and lower but clear two carinae on each side; apical part of rostrum smooth, with sparse, longitudinal punctures.

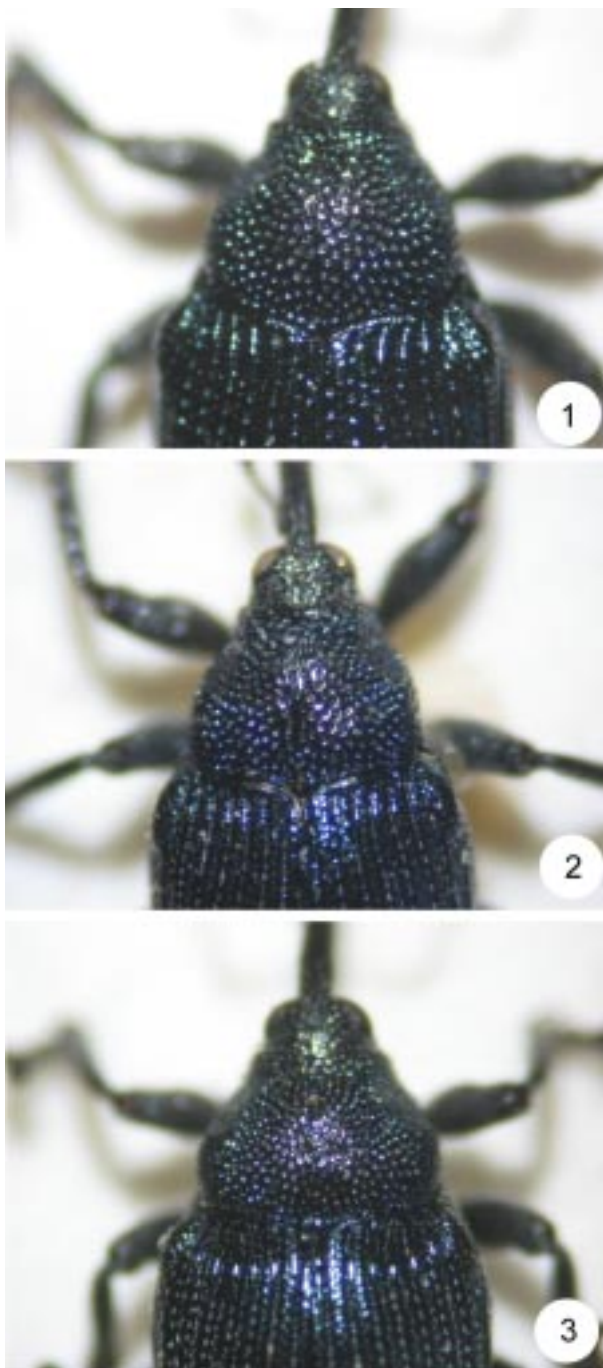
Antennae inserted slightly before middle of rostrum (closer to apex), scape slender, weakly expanded apically, slightly longer than funicle; first four joints strikingly longer than wide, last three subisodiametric; antennal club elongate, little more than twice as long as broad, as long as more than four last funicular joints combined.

Pronotum (fig.1) 1.2 x as broad as long, broadest behind midlength, clearly vaulted both longitudinally and transversally, apically constricted; constricted part flat in lateral view; sides moderately arcuated; lateral denticles though small, clearly expressed, median sulcus reduced to deep constriction in front of scutellum and shallow one behind apical constriction; densely and rather coarsely punctured, puncture diameter little less than elytral rows width at base; punctures with minute hairs.

Elytra 1.1 x as long as broad with moderately, rather weakly, arcuated sides; rows broad, close to base broader than interstices; interstices flat, predominantly with one row of large, subquadrate, shallow punctures with minute, hardly visible hairs.

Legs robust, covered with relatively long, well visible whitish scale-like hairs, slightly protruding in apical part of middle and hind tibiae; all femora with clearly expressed, sharply triangular tooth; tarsal claws with large auxiliary claws.

Biology unknown; taken by sweeping in late afternoon at altitude ca. 500 m asl.



1-3. Pronotum and anterior part of elytra: 1 – *Ceutorhynchus trichovenstris*, 2 – *C. verticalis*, 3 – *C. canaliculatus*

DISTRIBUTION

So far, known from locus typicus only, in southern Turkey (foothills of southern slopes of Taurus Mts.).

KEY TO SPECIES OF *CEUTORHYNCHUS CANALICULATUS* GROUP

1. Vestiture well developed, elytral rows with true, broad scales, interstices with 1-2 irregular rows of light brown, small but well visible scale-like hairs; ventral part of body densely covered with whitish broad scales 2.
- Vestiture obsolete, elytral rows without scales, interstices with minute, hardly visible hairs; ventral part of body with few sparse, inconspicuous whitish scales, predominantly with small hairs, seems to be bare (fig. 1) *C. trichovenstris* n. sp.
2. Elytral rows very narrow, interstices (close to base) about 1.5 x as broad as rows width or more; pronotum more coarsely punctured, punctures diameter as long as elytral rows width (close to base); sides of elytrae slightly arcuate in dorsal view, rather evenly; pronotum weakly vaulted in both directions, looks flat (fig. 2) *C. verticalis* COLONNELLI
- Elytral rows broader, interstices (close to base) less than 1.5 x as broad as rows width, pronotal punctures clearly smaller, their diameter strikingly smaller than elytral rows (close to base) width; elytrae more clearly arcuate behind shoulders in dorsal view. Pronotum clearly vaulted in both directions (fig. 3) *C. canaliculatus* BRISOUT

ACKNOWLEDGMENTS

We cordially thank Dr. Enzo COLONNELLI (Rome, Italy) for giving us the paratype of *C. verticalis* and Tomasz KONEFAŁ (Toruń, Poland) for taking all photos.

REFERENCE

- COLONNELLI, E., 1992. Due nuove specie italiane di *Ceutorhynchus* GERMAR (Coleoptera, Curculionidae). Boll. Soc. ent. Ital., **123**: 227-233.
- , 2004. Catalogue of Ceutorhynchinae of the World, with a key to genera. Argania editio, Barcelona, 124 pp.