

Genus	Vol. 17(4): 567-570	Wrocław, 28 XII 2006
-------	---------------------	----------------------

Metrionella tucumana, a new species from Argentina (Coleoptera: Chrysomelidae: Cassidinae: Cassidini)

LECH BOROWIEC

Department of Biodiversity and Evolutionary Taxonomy, Zoological Institute, University of
Wrocław, Przybyszewskiego 63/77, 51-148 Wrocław, Poland,
e-mail: cassidae@biol.uni.wroc.pl

ABSTRACT. *Metrionella tucumana*, species new to science, is described from Tucuman, Argentina.

Key words: entomology, taxonomy, new species, Coleoptera, Chrysomelidae, Cassidinae, Cassidini, *Metrionella*, Argentina.

The genus *Metrionella* was proposed by SPAETH (1932) for small Cassidini species with regularly punctate elytra, smooth and shiny intervals, claws with large basal tooth, clypeus with deep clypeal grooves, forming a triangular clypeal plate, and with deep frontoclypeal sulci. SPAETH (1932) included in *Metrionella* 10 species, 7 of them described as new to science, and designated *Coptocycla erratica* BOHEMAN, 1855 as type species. He reviewed all species, with detailed descriptions and perfect key to all taxa. Only one species has been described after the revision (Borowiec 2002). Colour photos of all species, except *M. biguttulata* SPAETH, 1932, are available in BOROWIEC and ŚWIĘTOJAŃSKA (2002).

In material studied recently I have found a new species of the genus *Metrionella* SPAETH collected in Tucuman, Argentina, belonging to the group of species with slim, oval body. The locality in Argentina is the southernmost in South America for the genus *Metrionella*.

Metrionella tucumana n. sp.

ETYMOLOGY

Named after its terra typica, Tucuman province in northern Argentina.

DIAGNOSIS

In SPAETH's key (1932), it runs to a group of species with triangular clypeal plate not shorter than the half length of clypeus, regularly oval body outline, and uniformly yellow dorsum (couplets 4 and 5). The group comprises, except the new species, *Metrionella connata* SPAETH, 1932 and *M. bilimeki* SPAETH, 1932. *M. tucumana* distinctly differs from both congeners in brownish-black trochanters (yellow in *M. bilimeki* and *M. connata*). *M. connata* has shorter triangular clypeal plate with sides of the triangle converging in the half length of clypeus (in *M. tucumana* sides of the triangle converging close to antennal insertions). *M. bilimeki* also differs in extremely deep and broad frontoclypeal grooves and sides of clypeal triangle converging in longer distance from antennal insertions than in *M. tucumana*. *Metrionella biguttulata* SPAETH, 1932 has also oval body and, among slim species, is geographically the most close to *M. tucumana* but differs in extremely short clypeal plate with clypeal triangle more than two times as wide as long and maculate elytra. Other species of the genus *Metrionella* differ in stouter body, broadly oval, circular or subtriangular, and/or presence of dorsal pattern.

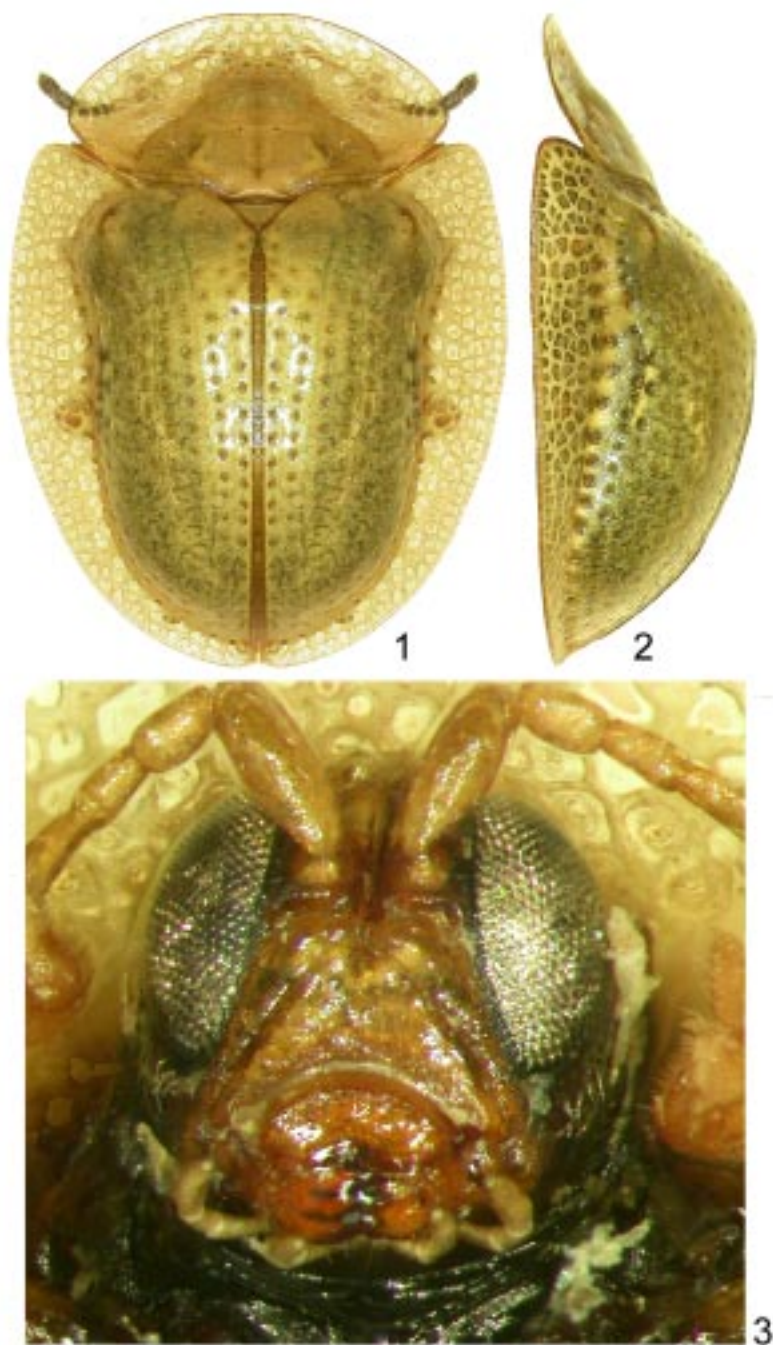
DESCRIPTION

Length 5.2 mm, width 3.9 mm, length of pronotum 1.8 mm, width of pronotum 3.0 mm, length/width ratio 1.33, width/length ratio of pronotum 1.67. Body oval (fig. 1).

Pronotum, scutellum, and elytra uniformly yellow. Clypeus yellow. Thorax black. Two basal sternites black, sternites III-V mostly black, narrowly yellow marginate. Coxae black, trochanters brownish-black, femora yellow, only narrowly infusate at base, tibiae and tarsi yellow. Antennal segment 1-7 yellow, 8-10 dark brown, 11 yellowish ventrally and yellowish brown dorsally.

Pronotum moderately broad, 1.67 times as wide as long, widest at mid-length. Anterior margin forms regular arch, sides narrowly rounded. Whole surface of pronotum smooth, shiny, explanate margin with honeycomb structure.

Scutellum triangular, with transverse sulcus. Base of elytra distinctly wider than base of pronotum. Humeri rounded, moderately protruding anterad. Elytral disc distinctly, unevenly convex with the top of convexity at postscutellar point, but not tuberculate (fig. 2). Puncturation of disc regular, moderately coarse, in two sutural rows punctures on slope almost as coarse as in anterior half of disc. Punctures in anterorolateral part of disc approximately twice coarser than in two sutural rows. Interspaces 1-3 broad, 2.0-2.5 times as wide as rows, interspaces in anterolateral parts of disc 1.2-2.0 times as wide as rows. Surface of intervals flat,



1-3. *Metrionella tucumana* n. sp.: 1 – habitus dorsal, 2 – habitus lateral, 3 - head

smooth, and mirror. Explanate margin of elytra moderately broad, in the widest part as wide as half width of disc of elytron, moderately declivous. Surface of the margin smooth, mirror, with honeycomb structure. Apex of elytral epipleura bare.

Clypeus broad, approximately 1.7 times as wide as long. Clypeal lines deep, forms a triangular clypeal plate, sides of the triangle converging in anterior 1/3 length of clypeus (fig. 3). Clypeal triangular plate impunctate, narrowly impressed along middle. Frontoclypeal sulci deep but narrower than in related *M. bilimeki* and *M. connata*. Antennae moderately long, length ratio of antennal segments: 100:47:47:53:50:47:50:35:41:41:82. Segment 3 as long as segment 2, segment 4 approximately 1.13 times as long as segment 3, segments 9 and 10 only slightly longer than wide. Prosternal collar slightly narrower than in *M. connata* but slightly wider than in *M. bilimeki*. Prosternal process typical for the genus *Metrinella*, broad, not constricted in the middle, apex only slightly expanded laterally. Surface of prosternal process regular, smooth, with a few small punctures. Claws with large basal tooth.

TYPE MATERIAL

Holotype: "ARGENTINA, Tucuman, San Javier, 26.41 S 65.22 W, 21 X 1999" (preserved at the Department of Biodiversity and Evolutionary Taxonomy, Institute of Zoology, University of Wrocław, Poland).

ACKNOWLEDGEMENTS

This paper was supported by scientific grant of the Zoological Institute, University of Wrocław, 1018/IZ/2006.

REFERENCES

- BOROWIEC, L., 2002. *Metrinella tumacoensis*, a new species from Colombia (Coleoptera: Chrysomelidae: Cassidinae). Genus, Wrocław, **13**: 139-142.
- BOROWIEC, L., ŚWIĘTOJAŃSKA, J., 2002. Cassidinae of the world - an interactive manual (Coleoptera: Chrysomelidae). Permanent electronic publication (open in 2002): www.biol.uni.wroc.pl/cassidae/katalog%20internetowy/index.htm.
- SPAETH, F., 1932. Über die mit *Metriona erratica* verwandten Arten (Col., Chrysom. Cass.). Folia Zool. Hydrobiol., **4**: 263-270.