

Genus	Vol. 21(4): 631-635	Wrocław, 27 XII 2010
-------	---------------------	----------------------

Description of a new species of *Cytaea* KEYSERLING 1882 from Fiji (Araneae: Salticidae)

BARBARA PATOLETA¹ & JOANNA GARDZIŃSKA²

Katedra Zoologii, Uniwersytet Przyrodniczo-Humanistyczny w Siedlcach, Prusa 12, 08-110 Siedlce,
Poland, e-mail: 1patoleta@uph.edu.pl, 2gard@uph.edu.pl

ABSTRACT. The new species of the jumping spider, *C. taveuniensis*, is described, diagnosed and illustrated.

Key words: arachnology, taxonomy, *Cytaea*, new species, jumping spiders, Salticidae, Pacific Is., Fiji.

INTRODUCTION

The genus *Cytaea* KEYSERLING, 1882 is known as Indo-Pacific genus of the New Guinean origin (Żabka 1993). It is represented by four species in Fiji archipelago: *C. koronivia* BERRY et al. 1998, *C. nausori* BERRY et al. 1998, *C. vitiensis* BERRY et al. 1998 and *C. taveuniensis* n. sp. *Cytaea* species are usually found in shrubs, plants, especially broad-leaved (PRÓSZYŃSKI 2010). Examined specimens do not correspond with any species hitherto known, however the most similar palps were found in *C. nausori* from Viti Levu (Fiji).

The genus was previously placed in subfamily Cytaeinae by SIMON (1903), but MADDISON & HEDIN (2003) considered it as a member of Euophryinae. PLATNICK (2010) listed 36 nominal species, and PRÓSZYŃSKI (2010) 38 species. In fact these lists of species differ in as many as five species.

MATERIAL AND METHODS

The study is based on ethanol-preserved material from Fiji, provided by Dr Robert RAVEN (Queensland Museum, Brisbane = QM). The drawings were made using a grid

system. A Canon PowerShoot A620 digital camera, attached to the stereomicroscope and Helicon Focus software were used for photographing specimens. Measurements are given in millimetres.

Abbreviations used: AEW - anterior eye width, AME – anterior median eyes, AL - abdomen length, CH - cephalothorax height, CL - cephalothorax length, CW - cephalothorax width, EFL - eye field length, L - leg, PEW - posterior eye width.

Genus *Cytaea* KEYSERLING, 1882

Cytaea KEYSERLING 1882, p. 1380; SIMON 1903, pp. 810-817; ŽABKA 1991, p. 24; BERRY et al 1998, pp. 150-151; MURPHY & MURPHY 2000, p. 349.

According to BERRY et al. (1998) genus *Cytaea* is characterized by two-cusp tooth on retromargin of chelicerae and 3 to 6 teeth on promargin, lateral spines on all tibiae, patellae and metatarsi, and dorsal spine near base on tibiae. *Cytaea* can be distinguish from similar genera in the entire Pacific (like *Ascyltus*, *Euryattus* and *Servaea*), by very short tibia and patella of the males palp, as wide as long or wider (BERRY et al. 1998).

***Cytaea taveuniensis* n. sp.**

(Figs 1-7)

ETYMOLOGY

Named after the island of Taveuni in the Fiji archipelago, the type locality.

DIAGNOSIS

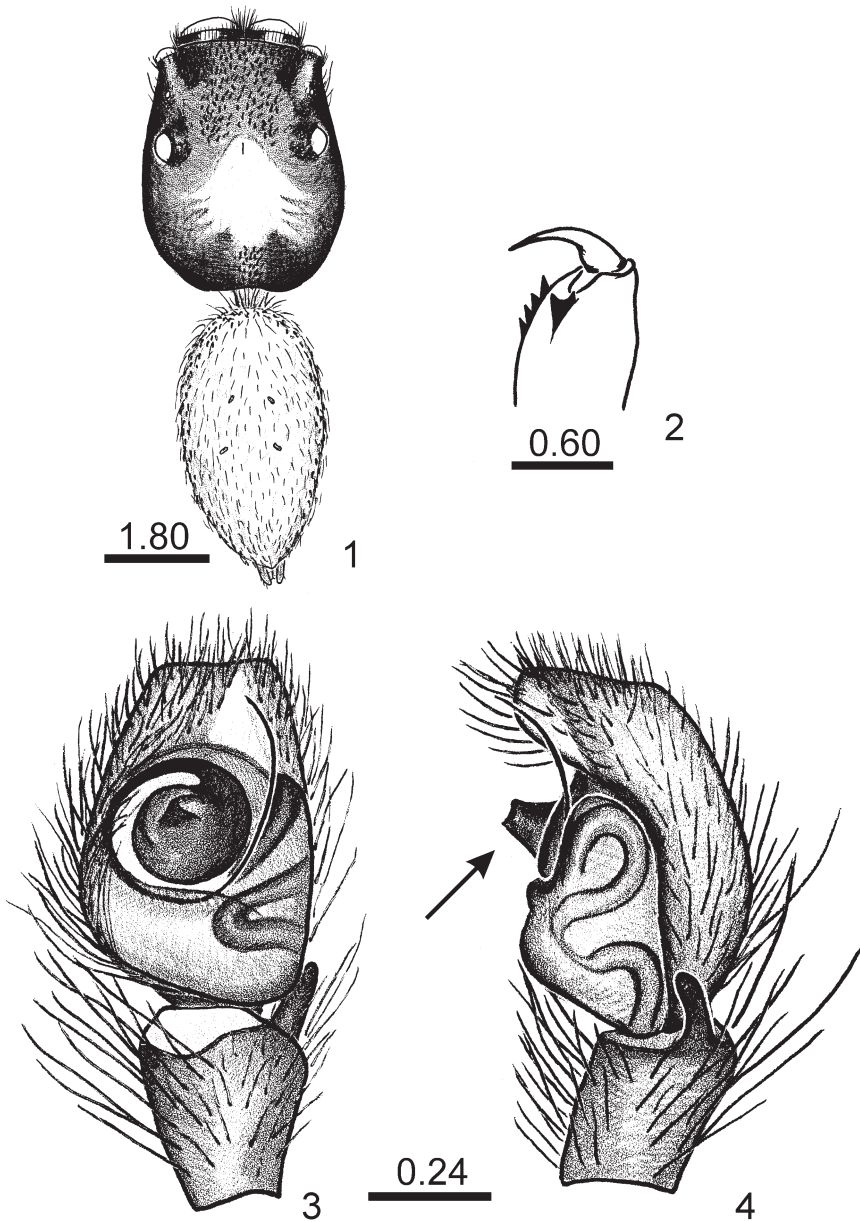
Distinguishable from other members of the genus by the rised embolic base (figs. 4, 6).

DESCRIPTION.

Male. Holotype (figs 1-7). Cephalothorax lightbrown with lighter leaf-like belt on the posterior slope (fig. 1). Eye field trapezoid, wider than long, covered with numerous brown scales. Surrounding of eyes dark-black with white hairs. Fovea visible, placed between PLE. Sides brown. Abdomen oval, yellowish, with brown seate. Spinnerets light-brown. Clypeus light-brown, height 13% of AME diameter. Chelicerae light-brown, *fissidentati* (figs. 2, 7). The cheliceral promargin has four teeth. Maxillae and labium light-brown. Sternum oval, whitish. Venter whitish. Palps brown (fig. 7). Embolus coiled counterclockwise, thin and long with the base located anterolaterally (fig. 3). Sperm ducts meandering across tegulum. Tibia light-brown, tibial apophysis short, slightly curved (fig. 6). Legs yellowish with darker tarsi, metatarsi and tibiae.

Measurements: CL 2.45, CW 1.95, CH 1.30, EFL 1.00, AEW 1.90, PEW 1.85, AL 2.35, AW 1.20, LI 6.72, LII 5.52, LIII 6.28, LIV 6.40.

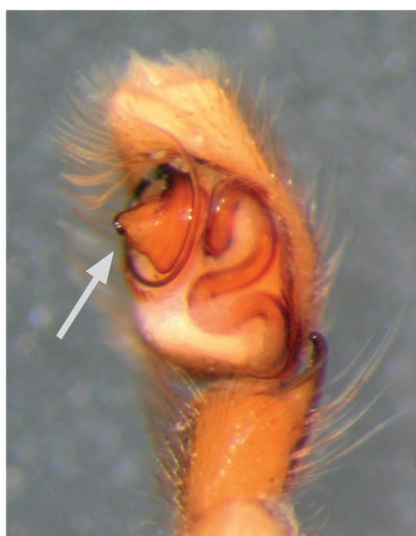
Female. Unknown.



1-4. *C. taveuniensis* sp. n. male: 1. dorsal view; 2. cheliceral dentition; 3. palpal organ, ventral view; 4. palpal organ, lateral view; scales on drawings as in figures



5



6



7

5-7. *C. taveuniensis* sp. n. male: 5. cephalothorax, antero-lateral view; 6. palpal organ with risen embolic base and curved tibial apophysis; 7. Chelicerae and the right palp

MATERIAL EXAMINED

Holotype: male (QM S35587), Fiji: Taveuni: L. Tagimaucia track, 300-400 m alt., 17 July 1987, coll. MONTEITH & COOK. Paratype: male (QM S35636), Fiji: Taveuni: des Vocux Peak, 900 m alt., Berlese, 16 July 1987, coll. MONTEITH & COOK.

ACKNOWLEDGMENTS

We would like to thank Dr Robert RAVEN (Queensland Museum, Brisbane) for providing specimens for study. We are grateful to Prof. M. ŽABKA (University of Podlasie, Siedlce) for critical comments during the research.

REFERENCES

- BERRY, J. W., BEATTY, J. A., PRÓSZYŃSKI, J., 1998. Salticidae of the Pacific islands. III. Distribution of seven genera with descriptions of nineteen new species and two new genera. *J. Arachnol.*, **26**: 149-189.
- KEYSERLING, E., 1882. *Die Arachniden Australiens*, Nürnberg, **2**: 1325-1420.
- MADDISON, W. P., HEDIN, M., C. 2003. Jumping spider phylogeny (Araneae: Salticidae). *Invertebrate Systematics*, **17**: 529-549.
- MURPHY, F., MURPHY, J., 2000. *An Introduction to the Spiders of South East Asia*. Malaysian Nature Society, Kuala Lumpur: 624 pp.
- PLATNICK, N. I., 2010. The World Spider Catalog, Version 10.5 Copyright AMNH 2000-2019. <http://research.amnh.org/entomology/spiders/catalog/>
- PRÓSZYŃSKI, J., 2010. Monograph of the Salticidae (Araneae) of the World. (Version revised in March 13th, 2010). <http://www.miiiz.waw.pl/salticid/main.htm>
- SIMON, E., 1903. *Histoire Naturelle des Araignes*. **2**(3): 381-668.
- ŽABKA, M., 1991. Studium taksonomiczno-zoogeograficzne nad rodziną Salticidae (Arachnida: Araneae) Australii. *Rozprawa naukowa* nr 32. WSRP Siedlce: 110 pp.
- , 1993. Salticidae (Arachnida: Araneae) of New Guinea – a zoogeographic account. *Boll. Acc. Gioenia Sci. Nat.* **26**(345): 389-394.