

A new species of *Taumacera* THUNB. from Sarawak, Malaysia  
(Coleoptera: Chrysomelidae: Galerucinae)

MOHAMED S. MOHAMEDSAID

Centre for Insect Systematics, Universiti Kebangsaan Malaysia, 43600 Bangi, Malaysia

ABSTRACT. *Taumacera tibialis*, n.sp. is described from Sarawak, Malaysia. *Taumacera nigripennis* (JACOBY) is recorded from Borneo for the first time.

INTRODUCTION

The genus *Taumacera* THUNBERG is very peculiar with its third antennal segment greatly enlarged, kidney-shaped. In Borneo, the genus is represented by one species, *Taumacera sucki* WEISE. This paper, which deals with species from Sarawak, the Malaysian state in Borneo, reports the occurrence of one new species and a new record for Borneo. For the past five years of my survey on the chrysomelid beetles from Sabah (another Malaysian state in the northern part of Borneo) I have not yet found a *Taumacera*. The genus *Taumacera* from Peninsular Malaysia has been reviewed by MOHAMEDSAID (1993).

SYSTEMATICS

*Taumacera tibialis*, new species  
(Fig. 1)

Head brownish, impunctate, shiny; frontal tubercles broadened, transversely raised; frontoclypeus broadly triangularly raised, smooth; labrum subquadrate, sparsely covered with moderately long pubescence, its apical margin sinuate; mandibles robust, blackish at tips; maxillary palpi long, the penultimate segment

subcylindrical, the terminal smaller, conical. Eyes moderately large, with interocular space twice as broad as the transverse diameter of each oculus. Antennae as long as two-third of the body length; segment 1 dilated apically, shiny; segment 2 very small; segment 3 strongly dilated, kidney-shaped, with the upper edge broadly and deeply excavated; segment 4 inserted subapically on segment 3, subcylindrical, curved in the middle; segments 5-6 subequal in length, narrower, shorter than 4; segments 7-9 subequal in length, shorter than 6; segments 10-11 subequal in length, narrower than 9. Pronotum dark brown, shiny, oblong, broadest at apical one-third; anterior border unmarginated, lateral borders thickly marginated, posterior border moderately thickly marginated; disc convex, moderately smooth, sparsely covered with fine punctures. Scutellum black, smooth, triangular, as long as broad. Elytra yellowish in the middle, dark brown on lateral sides; sides parallel, rounded at apex; disc densely covered with small punctures; epipleuron broad, gradually narrowed to apex. Pygidium exposed, black. Ventral surfaces black, densely covered with long pubescence. Metasternum with an oblong median process, projected on the posterior border, between coxae. Legs yellowish; meta-tibia expanded internally at apex, forming a process with two sharp points; first segment of pro-tarsus short, as broad as long, one-third as long as the rest of tarsal segments combined; first segment of meta-tarsus narrower, four times longer than broad, slightly longer than the rest of tarsal segments combined. Apical sternite with median lobe transverse. Length 6.8-7 mm.

Female. Antennae normal, filiform. Apical sternite entire. Legs with pro-tibiae not emarginate; meta-tibiae without apical process. Metasternum without median process. Length 7-8.2 mm.

HOLOTYPE. Male. MALAYSIA, Sarawak, Taman Negara Lambir, 4-8. ii. 1993, SALLEH & ISMAIL.

PARATYPES. Same data as the holotype, 4 males, 5 females; Sarawak, Taman Negara Lambir, 25-29.vi. 1993, ISMAIL, RUSLAN & ZABIDI, male, 5 females; 1-4.ix.1993, ISMAIL, SHAM & ZABIDI, Male, 2 females; 13-15.i.1992, SALLEH & ZAIDI, female. Sarawak, Lanjak Entimau, 28-29.ii.1992, ZAIDI, 2 males.

VARIATIONS. Six of the paratypes with pronotum brownish, unlike the typical form which is dark brown.

REMARKS. The new species resembles *Taumacera sucki* WEISE and *Taumacera subapicalis* MOHAMEDSAID, but differs in male having emarginate pro-tibiae.

### *Taumacera nigripennis* ( JACOBY )

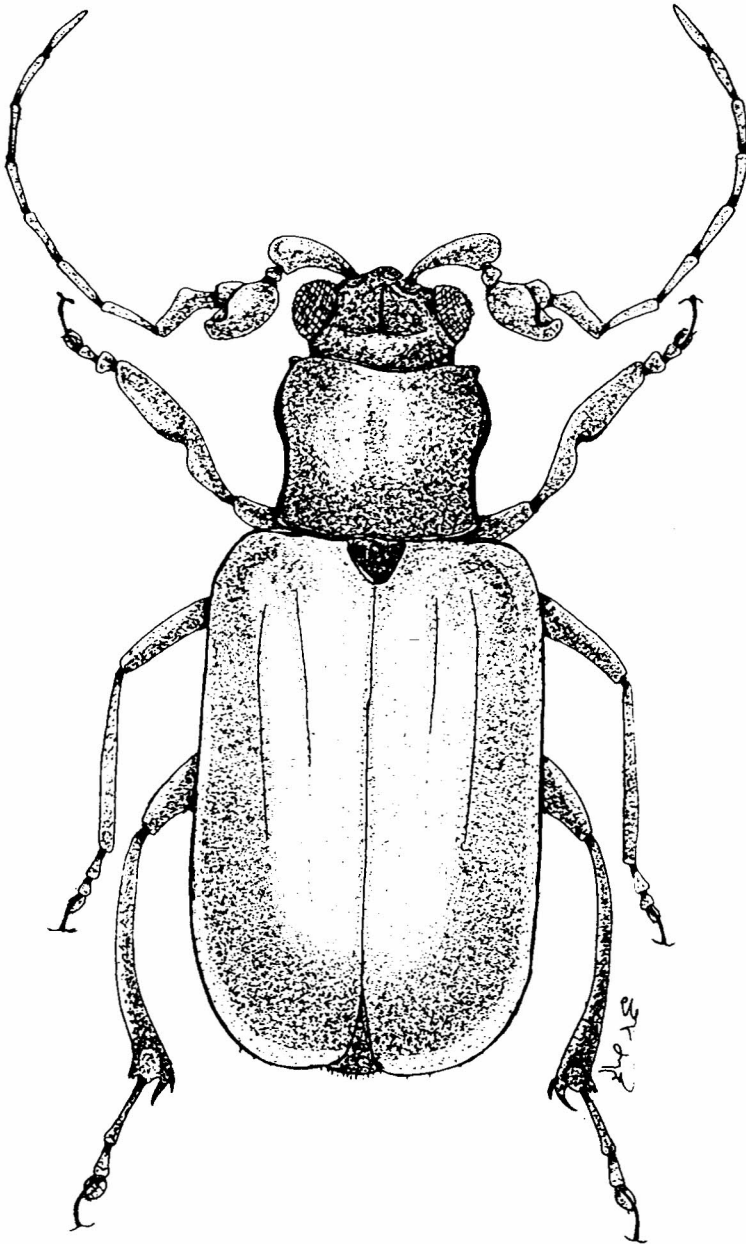
*Metellus nigripennis* JACOBY, 1899: 297 (Sumatra).

*Thaumacera nigripennis*: WEISE, 1922, 65: 86.

*Taumacera nigripennis*: KIMOTO, 1990, 39: 232; MOHAMEDSAID, 1993: 116 (Peninsular Malaysia).

Specimens examined: SARAWAK, Lanjak Entimau, 28-29 II 1993, Zaidi, UKM, 4.

REMARKS. This is a new record for Borneo.



1. Habitus of *Taumacera tibialis*, new species

## ACKNOWLEDGEMENTS

Field trips to Sarawak were funded by the IRPA Project No 4-07-03-007. The author would like to thank the Director of Sarawak Forestry Department for the permission to carry out field trips in Sarawak.

## REFERENCE

- JACOBY, M. 1899. Descriptions of the new species of Phytophagous *Coleoptera* obtained by Dr. DOHRN in Sumatra. *Stett. Ent. Ztg.*, **60**: 259-313.
- KIMOTO, S. 199~ Check-list of the *Chrysomelidae* of South East Asia, south of Thailand and west of Irian Jaya of Indonesia. VI. *Galerucinae*, 2. *Kurume Univ. Journ.*, **39**: 201-237.
- MOHAMEDSAID, M. S., 1993. On the genus *Cerophysa* CHEVROLAT and *Taumacera* THUNBERG from Peninsular Malaysia (*Coleoptera: Chrysomelidae: Galerucinae*). *Genus*, **4**(2): 113-119.
- WEISE, J. 1922. Chrysomeliden der Indo-Malayischen Region. *Tijdschr. Ent.*, **65**: 39-130.