

Genus	Vol. 20(1): 105-107	Wrocław, 30 III 2009
-------	---------------------	----------------------

The identity of *Neohylaspes rufofulva* CHÛJÔ, 1962 (Coleoptera: Chrysomelidae Galerucinae)

CHI-FENG LEE¹ & RON BEENEN²

¹Applied Zoology Division, Taiwan Agricultural Research Institute, 189 Chung-Cheng Road, Taichung
413, Wufeng, Taiwan, email: cflee@gate.sinica.edu.tw

²Martinus Nijhoffhove 51, NL -3437 ZP Nieuwegein, The Netherlands, email: r.beenen@wxs.nl

ABSTRACT. *Neohylaspes rufofulva* CHÛJÔ, 1962 is transferred to subspecies rank of *Laphris emarginata* BALY, 1864, new status. Subspecies from Taiwan distinctly differs from nominotypical form of continental China in elytra without dark pattern.

Key words: entomology, taxonomy, Coleoptera, Chrysomelidae, Galerucinae, *Laphris emarginata*, new status, China, Taiwan.

***Laphris emarginata rufofulva* (CHÛJÔ, 1962), new status**

Neohylaspes rufofulva CHÛJÔ, 1962: 163; KIMOTO 1966: 35 (as synonym of *Laphris emarginata* BALY, 1864).

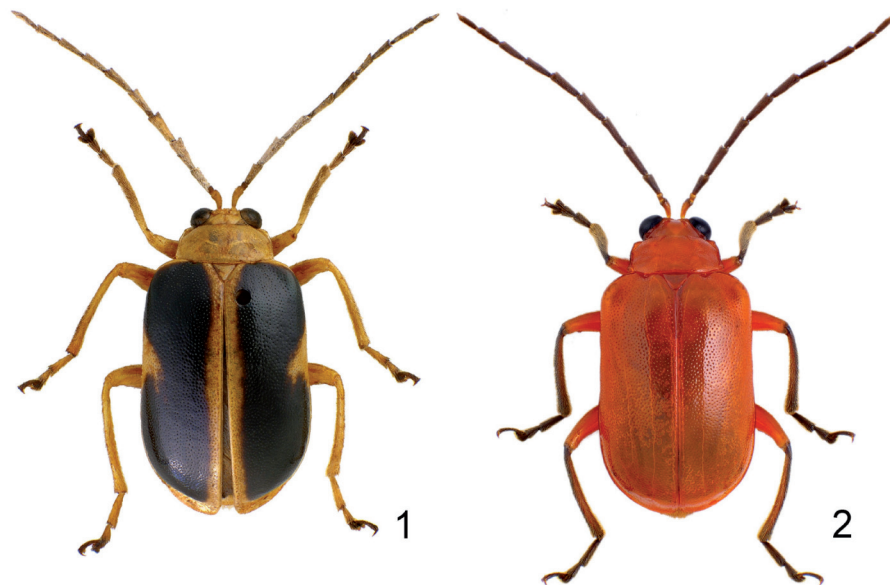
This taxon was described by CHÛJÔ (1962) as *Neohylaspes rufofulva* CHÛJÔ. KIMOTO (1966) considered it is a color variation of *Laphris emarginata* BALY, 1864 and regarded as a junior synonym. YANG (1993) studied the species belonging to the genus *Laphris* in China and concluded that *Laphris emarginata* has a constant color pattern: elytra brownish to yellowish brown with a large dark brown to black patch that shows an oblique excision at the outer margin in the middle. The specimens from Taiwan all have the elytra brownish to yellowish brown without a trace of a dark patch. These specimens show a completely identical color pattern as *Neohylaspes rufofulva* CHÛJÔ.

The external morphology of *N. rufofulva* perfectly fits the genus *Laphris* BALY, 1864 and therefore, the classification of this taxon in *Laphris* by KIMOTO (1966) is correct. However, we doubt that *L. rufofulva* is conspecific with *L. emarginata*.

Laphris emarginata (Fig. 1) differs from *L. rufofulva* (Fig. 2) by the presence of the black patch on each elytron and the black tarsomeres 3-5. However, apart from the constant differences in coloration, specimens of both populations do not differ in morphological characteristics, including the external morphology of the aedaeagus. Even the basal sclerites and the arrangement of spines on the internal sac of the aedaeagus do not differ between the specimens from Taiwan and China. *Laphris rufofulva* therefore has to be regarded as a subspecies of *L. emarginatus*: *L. emarginatus rufofulva* (CHŪJŌ) **new status**.

KIMOTO & TAKIZAWA (1997) depicted two colour forms of *Laphris emarginata* in the book on Taiwanese Galerucinae. Specimens of these colour forms are known to occur in China but have never been recorded from Taiwan as far as we know. The specimens depicted clearly belong to *Laphris emarginata emarginata* BALY and we assume the drawings to be executed basing on specimens originating in China.

The host plant for the genus has not been recorded before. We observed that adults feed on *Actinidia callosa* Lindl. var. *callosa* (Actinidiaceae).



1-2. Dorsum: 1 – *Laphris emarginata emarginata* BALY, 2 – *L. emarginata rufofulva* (CHŪJŌ)

Type material examined: Holotype ♂: “Taiwan Tikusiko (= Chutyuhu, near Yangmingshan), 20.VII.1938 Col. K. Endo”. Allotype ♀: “Taiwan Mt. Sôzan (= Yangmingshan), 24.V.1936 Col. M. Chujo” (both types in the Taiwan Agricultural Research Institute, Taichung, Taiwan).

Other material examined: 4 exs.: “Taiwan: Taipei, Yangmingshan, 24.V.2008, leg. M.-H. Tsao”; 7 exs., same locality and collector, 07.VI.2008; 7 exs, same locality and date, leg. S.-F. Yu; 3 exs.: “Taiwan: Taipei, Lengshuikeng, 22.VI.2008, leg. M.-H. Tsao”; 1 ex.: “Taiwan: Taoyuan, Tamanshan, 02.VIII.2008, lg. M.-H. Tsao”; 1 ex.: “Taiwan:

Taoyuan, Tungyanshan, 12.VII.2008, leg. H. Li” (Taiwan Agricultural Research Institute, Taichung, Taiwan and private collection of Ron Beene, the Netherlands).

We thank Taiwan Chrysomelid Research Team (TCRT) for assisting in collecting materials, Hsing-Tzung CHENG for taking color photographs, Charles STAINES for reviewing the manuscript.

REFERENCE

- CHÛJÔ, M., 1962. A taxonomic study on the Chrysomelidae from Formosa, Part 11, Galerucinae. *Phil. J. Sci.*, **91**(1-2): 1-239.
- KIMOTO, S., 1966. A list of the Chrysomelid specimens of Taiwan preserved in the Zoological Museum, Berlin. *Esakia, Kyushu Univ.* **5**: 21-38.
- KIMOTO, S., TAKIZAWA, H., 1997. Leaf Beetles (Chrysomelidae) of Taiwan. Tokai University Press. i-xvii, 1-581.
- YANG, X., 1993. Study on the genus *Larphris* and its phylogenetic relationship with related genera. *Acta Zootaxonomica Sinica* **18**(3): 363-369.