

Genus	Vol. 5(3): 165-167	Wrocław, 30 X 1994
-------	--------------------	--------------------

Spermophagus prevetti n. sp. from Nigeria
(Coleoptera: Bruchidae)

LECH BOROWIEC

Zoological Institute, University of Wrocław, Sienkiewicza 21, 50-335 Wrocław, Poland

ABSTRACT. A new species, *Spermophagus prevetti*, is described from Nigeria (Kano). It belongs to the species group with uniformly pubescent body, tarsal claws with large basal tooth, and internal sac of male genitalia without sclerites in apical third.

Spermophagus prevetti n. sp.

ETYMOLOGY

Dedicated to Dr. P.F. PREVETT who collected the holotype.

DESCRIPTION

Length: 2.6 mm, width: 1.9 mm.

Black, only hind tibial spines reddish.

Vestiture moderately dense, uniform greyish-brown, not covering body surface.

Body short-oval. Head short, eyes emarginate to 2/3 length. Frons as wide as width of eye, flat, without median keel. Antennae short, extending to hind angles of pronotum, segment 3 as long as 2, segments 8-10 roughly equal in length and width. Pronotum 1.6 times wider than long, doubly punctured, large punctures dense and deep, disposed almost uniformly on whole surface. Lateral margin in lateral view almost straight. Elytral rows strongly punctate, intervals in anterior half with irregular rows of large punctures. Pygidium strongly and densely punctate, intervals about twice narrower than puncture diameter. Hind tibia in basal half with indistinct dorsolateral

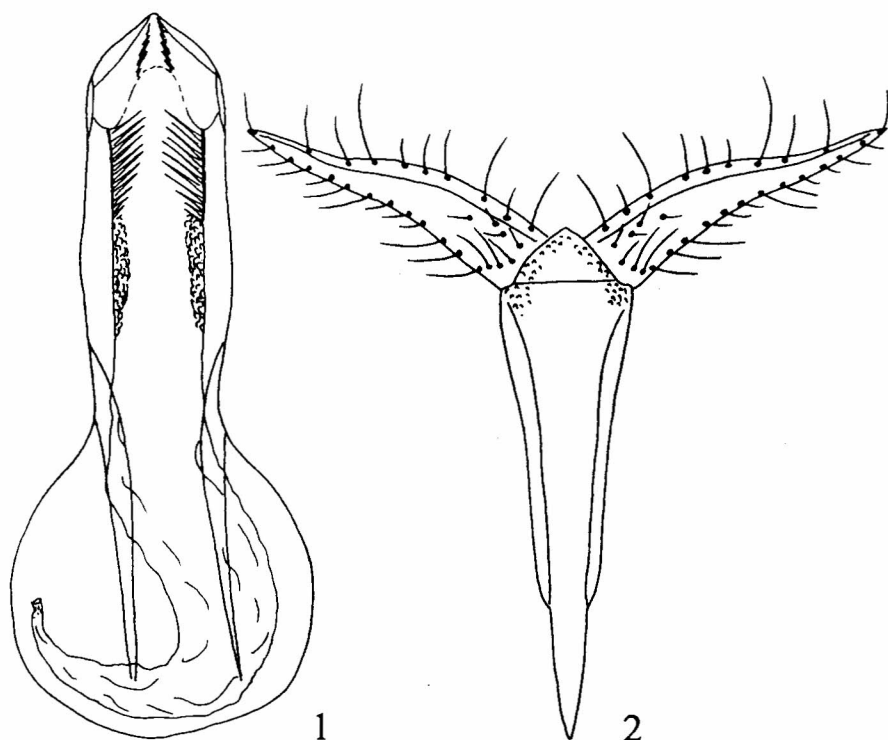
carina. Hind tibial spines sharp, short, inner spine slightly longer than the outer one. Claws with large basal tooth.

Male. Hind legs without sexual characters. Sternum V emarginate to half length. Median lobe moderately long (fig. 1), ventral valve subtriangular with slightly obtuse apex, dorsal valve triangular. Internal sac in apical half without sclerites, in basal part with two bands of dense needles, and behind the needles with dense granules. Lateral lobes tape-like, elongate, with apex acute, margins on whole length with sensory hairs of different length. Basal plate moderately broad, narrowed apically, strongly pigmented, especially on sides, anterior margin with triangular unpigmented plate (fig. 2).

Female unknown.

TYPE

Holotype male: Nigeria, Kano, Nov. 1961, P. E. PREVETT, ex *Guiera* flowers, no. 665 (preserved in British Museum, Natural History, London).



1-2. *Sperophagus prevetti* n. sp.: 1 - median lobe, 2 - lateral lobes

REMARKS

The genus *Spermophagus* SCHOENHERR was revised recently (BOROWIEC, 1991). In my key *S. prevetti* runs to couplet 97, with three species (*S. pygopubens* PIC, *S. sophorae* FAHR. and *S. cicatricosus* GYLL.) of elytral vestiture uniform, internal sac in apical half without sclerites, and tarsal claws with large basal tooth. *S. sophorae* differs in contrasting white pubescent scutellum (greyish-brown in *S. prevetti*), *S. pygopubens* differs in more elongate body, paler grey elytral pubescence, and lateral lobes with sensory hairs only on the outer margin (on both outer and inner margin in *S. prevetti*). *S. cicatricosus* is the most similar, and externally very difficult to distinguish, especially forms from eastern Africa, but it is usually smaller, scarcely and darker brown pubescent (especially forms from western Africa are very scarcely pubescent), external spine of hind tibia in western populations is usually very short, squamiform (spiniiform in *S. prevetti*). *S. cicatricosus* differs distinctly in male genitalia with internal sac without group of needles or granules, and lateral lobes extremely short, not tape-like, slightly wider than long (elongate, tape-like in *S. prevetti*).

The female of *S. prevetti* is unknown but I have identified two females from Nigeria (Mariri near Kano, 23 XII 1961, 1, 14 I 1962, 1, from *Combretum* flowers, leg. P. F. PREVETT), which are externally very similar to the male of *S. prevetti*, and probably belong to the same species. On the other hand they are also similar to *S. cicatricosus* and I have some doubts about their identity with *S. prevetti*.

Acknowledgements. I would like to express my sincere thanks to Dr. P. F. PREVETT for the loan of the specimens.

REFERENCE

- BOROWIEC, L., 1991. Revision of the genus *Spermophagus* SCHOENHERR (Coleoptera: Bruchidae: Amblycerinae). Genus, suppl., 198 pp.